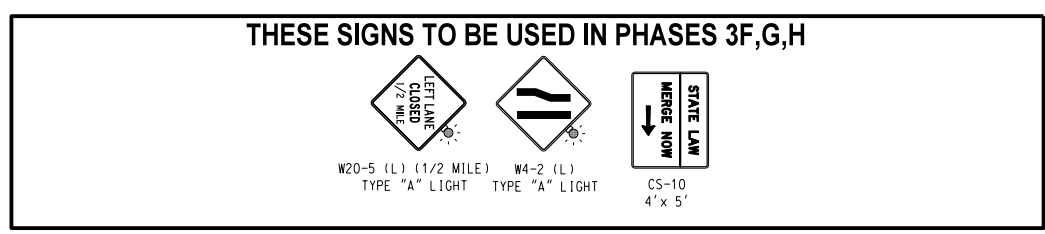
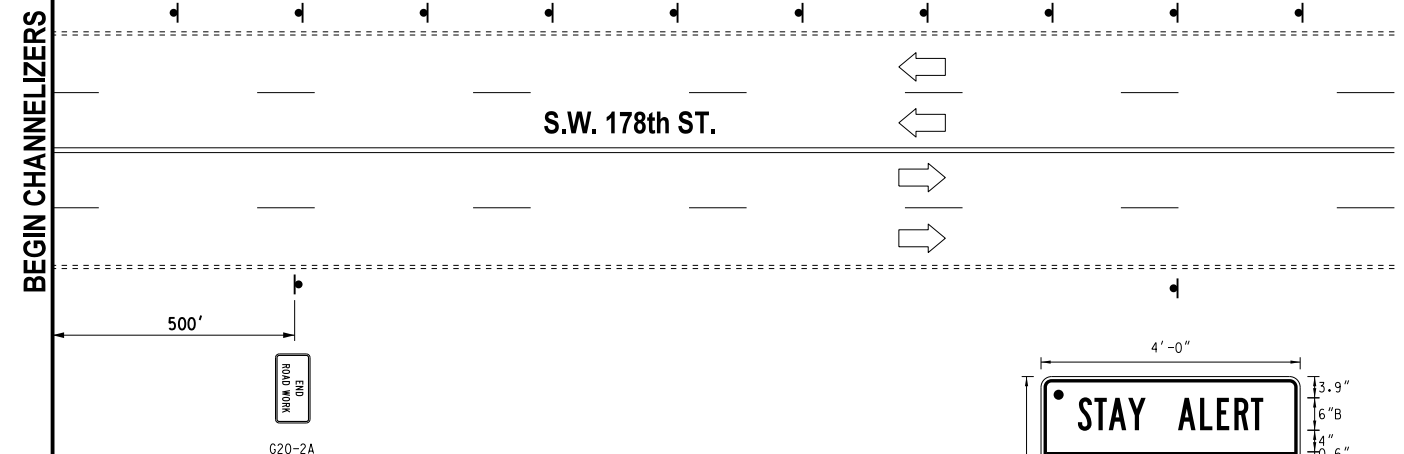
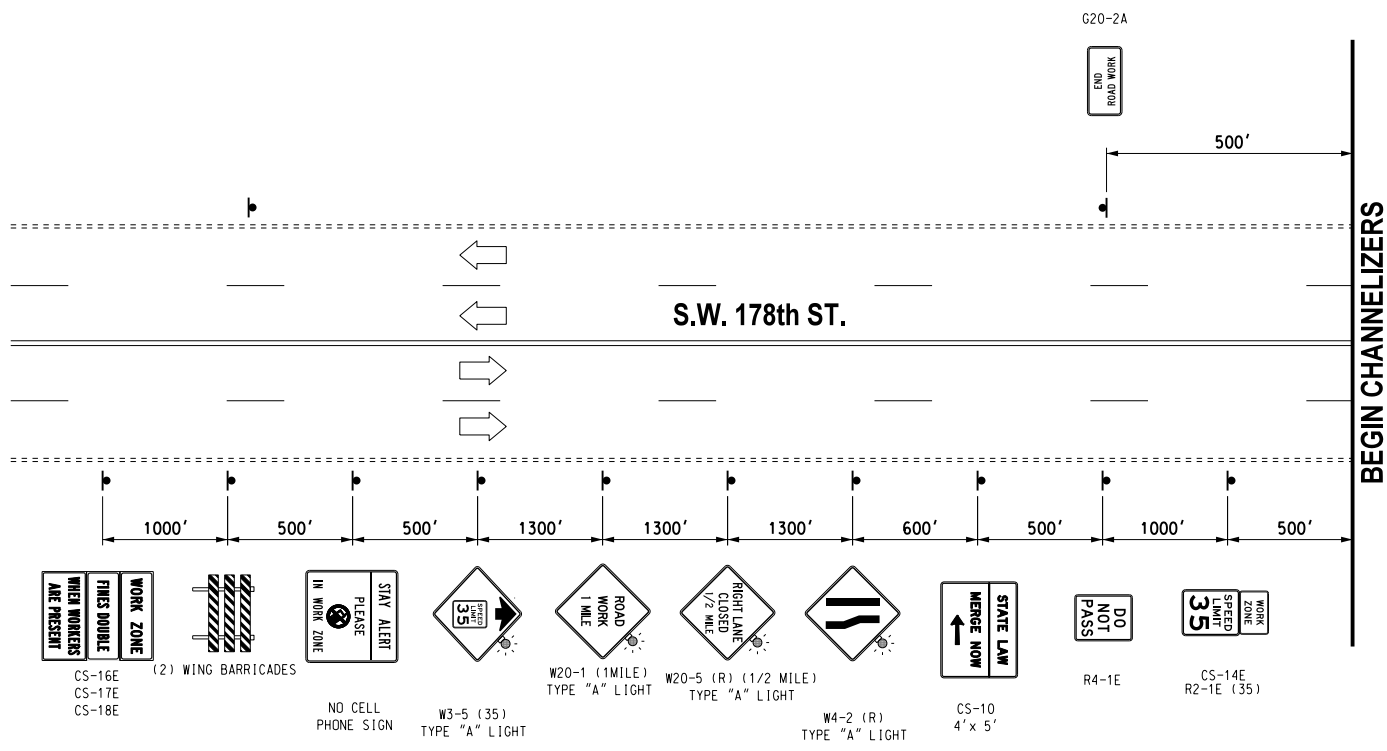
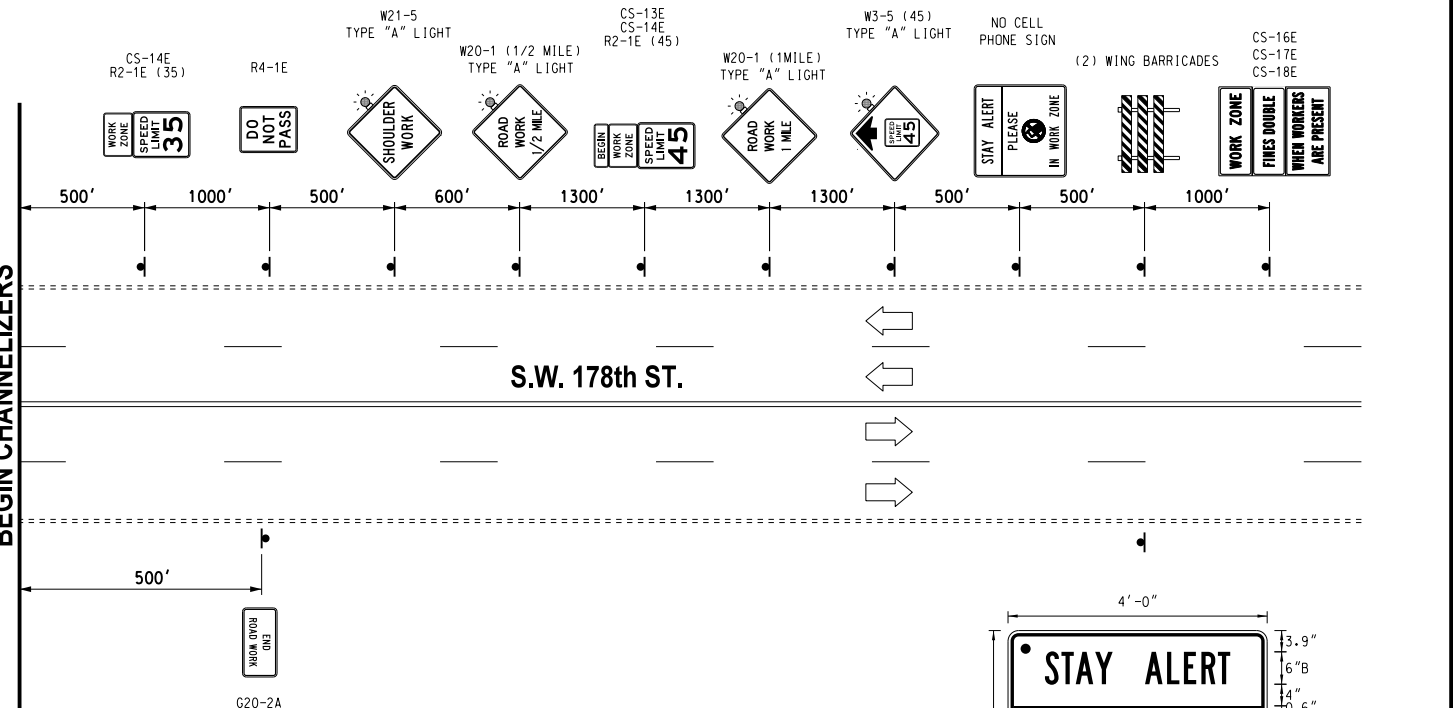
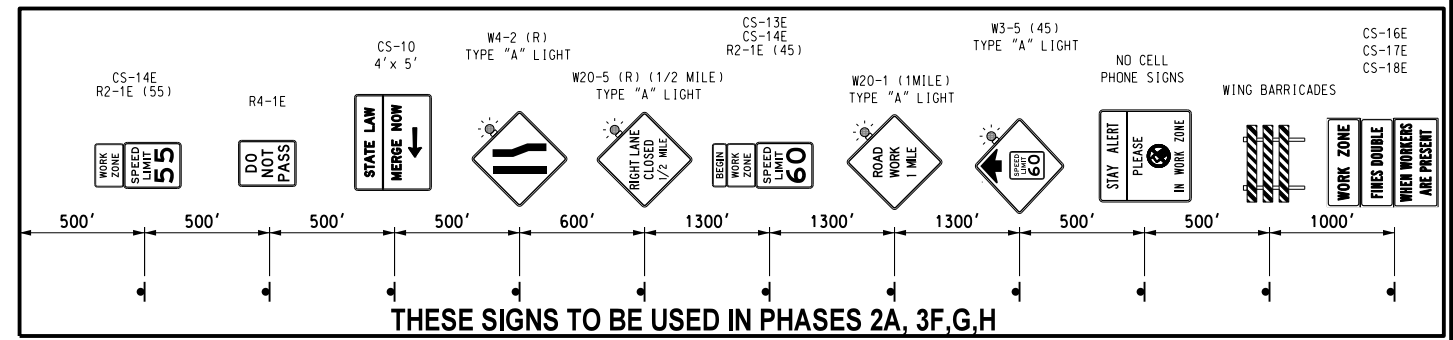
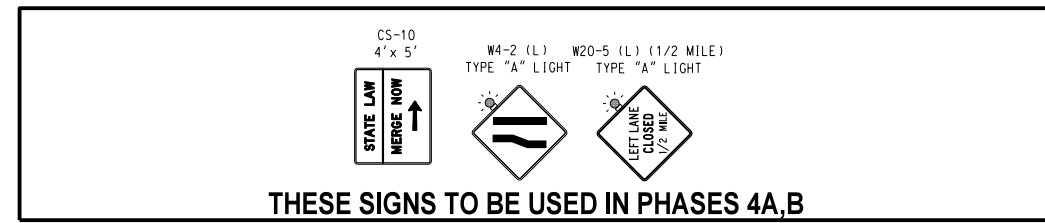


08/10/17 G:\0\Projects\T-1662B SH 74 @ NW 178th, NW 182nd & NW 206th\CAD\TC ADVANCE SIGNING 2 LANE SW 178th.dgn

REVISIONS		
NO.	DESCRIPTION	DATE



CONTRACTOR SHALL KEEP 11' MINIMUM LANES UNLESS OTHERWISE NOTED.



BORDER
R=1.5"
TH=0.63"
IN=0.47"

NO CELL PHONE SIGN

- LEGEND, SYMBOL & BORDER - BLACK NON-REFLECTIVE
BACKGROUND - YELLOW REFLECTIVE
- ▲ LEGEND, SYMBOL & BORDER - BLACK NON-REFLECTIVE
BACKGROUND - ORANGE REFLECTIVE

DRAWING NOT TO SCALE

Design	RWR	08/10/17
Drawn	SB	08/10/17



**TYPICAL ADVANCE WARNING SIGNS
N.W. 178th ST.**

State Job No. 14964(08) Sheet No. T31

OKLAHOMA COUNTY